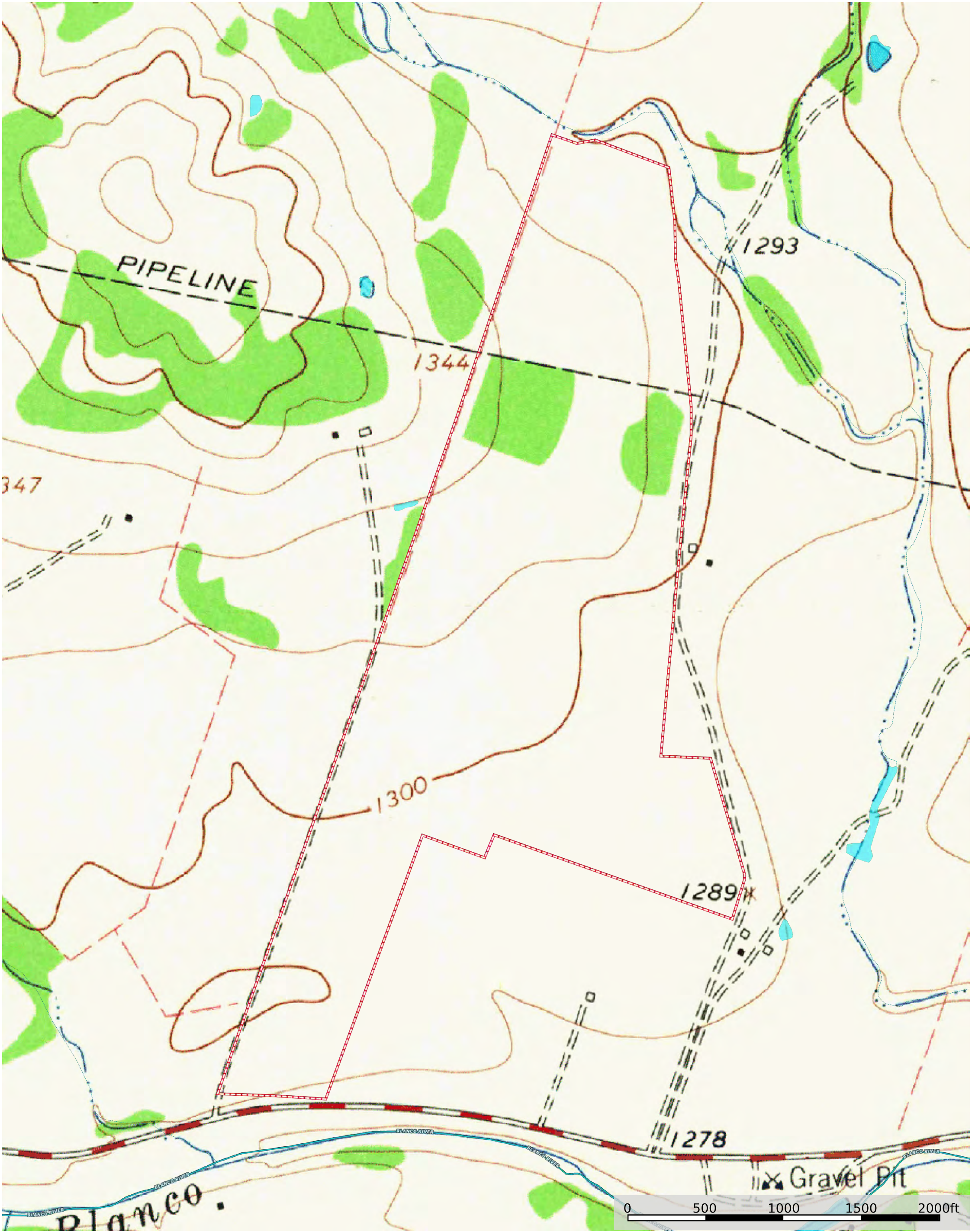


This is an aerial photograph of a rural landscape, likely in a western state, showing a large area outlined by a red dashed line. The terrain is a mix of brownish, cleared land and green, wooded areas. A river, labeled 'BLANCO RIVER', flows along the bottom edge of the map. Several roads and trails are visible and labeled: 'HEMER LN' on the left, 'KATLIN' running diagonally through the center, 'LOST CREEK' and 'LOST CREEK TRAIL' on the right, and 'BIG TRANCH' at the bottom right. Numerous small, light blue ponds are scattered throughout the landscape. A scale bar at the bottom right indicates distances from 0 to 2000 feet. The map also shows some small buildings and structures, possibly farmhouses or ranches, and a few small, light blue ponds.







 Boundary     Stream, Intermittent     River/Creek     Water Body